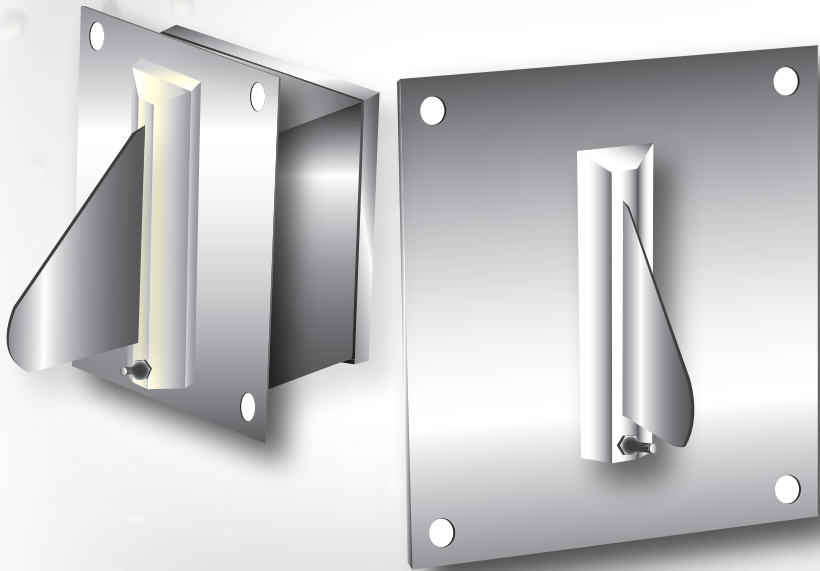




# DRYER MASTER DM510



# Moisture Control



# DRYER MASTER DM510

## The DM510





The Dryer Master DM510 is the premier control system using long time industry proven, GMC model based control strategy. Stainless steel constructed moisture sensors provide a long service life and are easy to calibrate against a bench top tester.

Moisture control is achieved by optimizing the products residence time. The system tracks inlet moisture, drying temperature, outlet moisture and discharge rate to determine the optimum dryer speed to bring as much product close to target as possible.

The system will interface with the most modern Variable Frequency Drives directly and usually only requires a small isolation interface to operate non isolated SCR type DC drive controllers.

The system provides printed records of operation as well as stores data to a memory module for retrieval to a computer using the terminal communication port.

## Features

-  **Set up for 8 Products;**  
Corn, Beans, Wheat, Canola, Corn/Hot/Other, Bean/Other, Sunflower/Other, Rice/Other  
Customizing Available
-  **Record Keeping**
-  **Total Remote Control Functions**  
Direct connection to Windows PC. Able to be networked for remote control over the internet.
-  **Remote Support**  
Using telephone modem or dedicated internet connection. Required for summary reports, dryer analysis, system setup, and help.

## Specifications

Specification subject to change without notice

### Operating Range, DM510 Control Unit:

- Temperature, 0°C to +50°C, 32°F to +125°F
- Relative Humidity, 5% to 95% non condensing
- Nema 2

### Operating Range, Moisture Sensor:

- Temperature, -25°C to +60°C, -13°F to +140°F
- Relative Humidity, 5% to 95% non condensing
- Nema 4, Explosion Proof and intrinsically safe models available
- Moisture Range, 0.25% to 45%, product dependent
- Product temperature range  
-20°C to +90°C, -4°F to +195°F

### Power Requirements:

- 100 to 250 Volts AC 25 VA for DM510 Control Unit
- 20 to 30 Volts DC 20mA for the Moisture Sensors
- The Moisture Sensors are powered by the DM510 Control Unit.
- One 4 wire instrument cable connects each Moisture Sensor to the DM510 Control Unit

### Communication

- RS232 Port for Serial Printer
- RS232 Terminal Port for Remote Communication
- 0-10 VDC, 0-20mA Output to Speed Controller
- Remote Alarm Output, 24 VDC 200 mA
- Calibration in Progress, 24 VDC 200mA
- Local Remote Control Output 24 VDC 200mA

© Dryer Moisture Systems Inc. 2009  
Dryer Master is a trade mark of Dryer Moisture Systems Inc.

[www.dryermaster.com](http://www.dryermaster.com)